

# Inserm Workshop 262

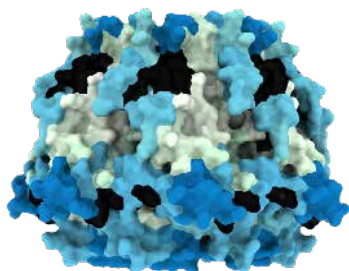
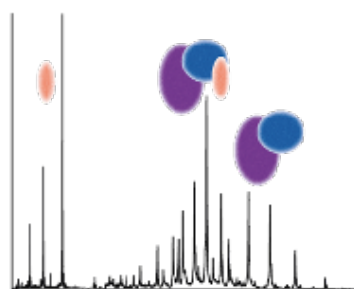
## Mass Spectrometry for Structural Biology



**REGISTRATION DEADLINE: October 29, 2021**

**ORGANIZERS:** Cherine BECHARA (IGF, Montpellier), Sarah CIANFERANI (IPHC, Strasbourg), Julien MARCOUX (IPBS, Toulouse)

**AIMS:** This workshop will present the fundamental and applied aspects of Mass Spectrometry-based structural techniques, as well as data analysis procedures. State-of-the-art lectures will be given by experts in the field, destined to both non-MS and MS specialists.



### PHASE I – CRITICAL ASSESSMENT

January 11-13, 2022 - Bordeaux

#### TOP-DOWN MASS SPECTROMETRY

Frank SOBOTT (University of Leeds, GBR), Michal SHARON (Weizmann Institute, ISR), Julien MARCOUX (IPBS, FRA), Alain BECK (Pierre Fabre, FRA)

#### NATIVE MASS SPECTROMETRY AND ION MOBILITY

Justin BENESCH (University of Oxford, GBR), Valérie GABELICA (IECB, FRA), Kostas THALASSINOS (UCL, GBR), Cherine BECHARA (IGF, FRA), Charlotte UETRECHT (Heinrich Pette Institute, DEU)

#### HYDROGEN-DEUTERIUM EXCHANGE COUPLED TO MASS SPECTROMETRY (HDX-MS)

Sébastien BRIER (Institut Pasteur, FRA), Argyris POLITIS (King's College, GBR), Sarah CIANFERANI (IPHC, FRA)

#### CROSS-LINKING AND INTEGRATIVE MODELING

Carla SCHMIDT (Martin Luther University, DEU), Petr MAN (BioCev, CZE), Matteo DEGIACOMI (Durham University, GBR)



### PHASE II – TECHNICAL WORKSHOP

Top-Down - IPBS, Toulouse - Week of 07/02

Native MS & Ion-Mobility - IGF, Montpellier - Week of 14/02

HDX-MS - LSMBO, Strasbourg - Week of 21/02

Hands-on experiments to apply main fundamental aspects developed during Phase I of the workshop. Three different training are proposed together with dedicated bio-informatics tools for data analysis: Native and Ion Mobility MS to analyse multiproteic and ligand binding complexes (IGF, Montpellier), Top-Down MS to identify proteoforms from an immunoprecipitation (IPBS, Toulouse) as well as HDX-MS to study the deuteration of standard proteins (IPHC, Strasbourg).

**SELECTION:** 8 trainees will be selected for each city among Phase I participants.

Information and registration  
ateliers@inserm.fr  
<https://tinyurl.com/3kt5axhx>